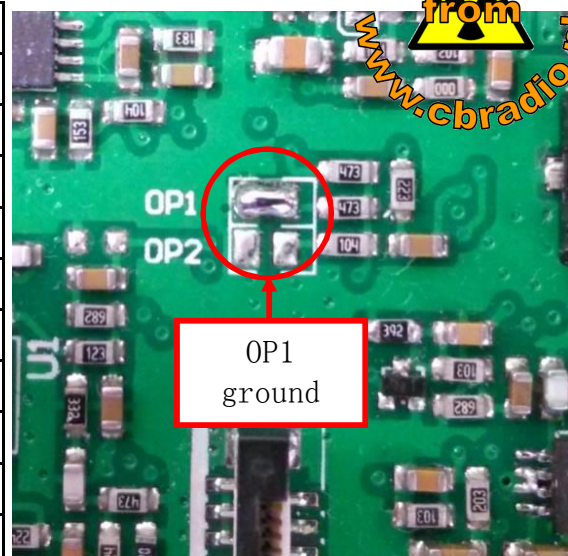


25.615-30.105MHz Full band mode

Channel/Power	frequency	band	Note
40CH AM/FM 4W	25.615-26.055MHz	AE	
40CH AM/FM 4W	26.065-26.505MHz	BE	
40CH AM/FM 4W	26.515-26.955MHz	CE	
40CH AM/FM 4W	26.965-27.405MHz	DE	Default
40CH AM/FM 4W	27.415-27.855MHz	EE	
40CH AM/FM 4W	27.865-28.305MHz	FE	
40CH AM/FM 4W	28.315-28.755MHz	GE	
40CH AM/FM 4W	28.765-29.205MHz	HE	
40CH AM/FM 4W	29.215-29.655MHz	IE	
40CH AM/FM 4W	29.665-30.105MHz	LE	

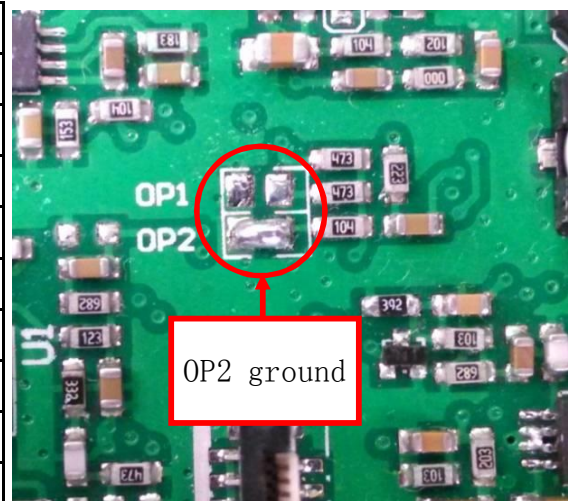


1、H/L power function : Hold PTT + RFG key to power on, press microphone UP/DN key to choose power level , PL stand for Low power, PH stand for high power, re-power on to store it.

2、-5KHz function: hold RFG for over 2 seconds to turn on -5KHz function, LCD displays "P", the frequency end with 0, Hold RFG again for 2 seconds to turn off -5KHz, the LCD display "E", frequency end with 5.

28.000-29.700MHz 10 meter Ametuer band mode

Channel/Power	frequency	band	Note
40CH AM/FM 4W	28.000-28.195MHz	HA	
40CH AM/FM 4W	28.200-28.395MHz	HB	
40CH AM/FM 4W	28.400-28.595MHz	HC	
40CH AM/FM 4W	28.600-28.795MHz	HD	Default
40CH AM/FM 4W	28.800-28.995MHz	HE	
40CH AM/FM 4W	29.000-29.195MHz	HF	
40CH AM/FM 4W	29.200-29.395MHz	HG	
40CH AM/FM 4W	29.400-29.595MHz	HH	
20CH AM/FM 4W	29.600-29.695MHz	HI	



1、H/L power function : Hold PTT + RFG key to power on, press microphone UP/DN key to choose power level , PL stand for Low power, PH stand for high power, re-power on to store it.

2、-5KHz function: hold RFG for over 2 seconds to turn on -5KHz function, LCD displays "P", the frequency end with 0, Hold RFG again for 2 seconds to turn off -5KHz, the LCD display "E", frequency end with 5.

Normal CB band mode(Default mode)

Channel/Power	frequency	band	Note
40CH AM/FM 4W	26.965-27.405MHz	EU	Default
40CH FM 4W	26.965-27.405MHz	CE	
40CH FM 4W	27.60125-27.99125MHz	UK	
40CH AM/FM 4W	26.960-27.400MHz	PL	
36CH AM/FM 4W	26.965-26.865MHz	I2	
40CH AM/FM 4W	26.965-27.405MHz	DE	
80CH FM 4W	26.565-26.955MHz		
27CH AM/FM 4W	26.965-27.275MHz	IN	

