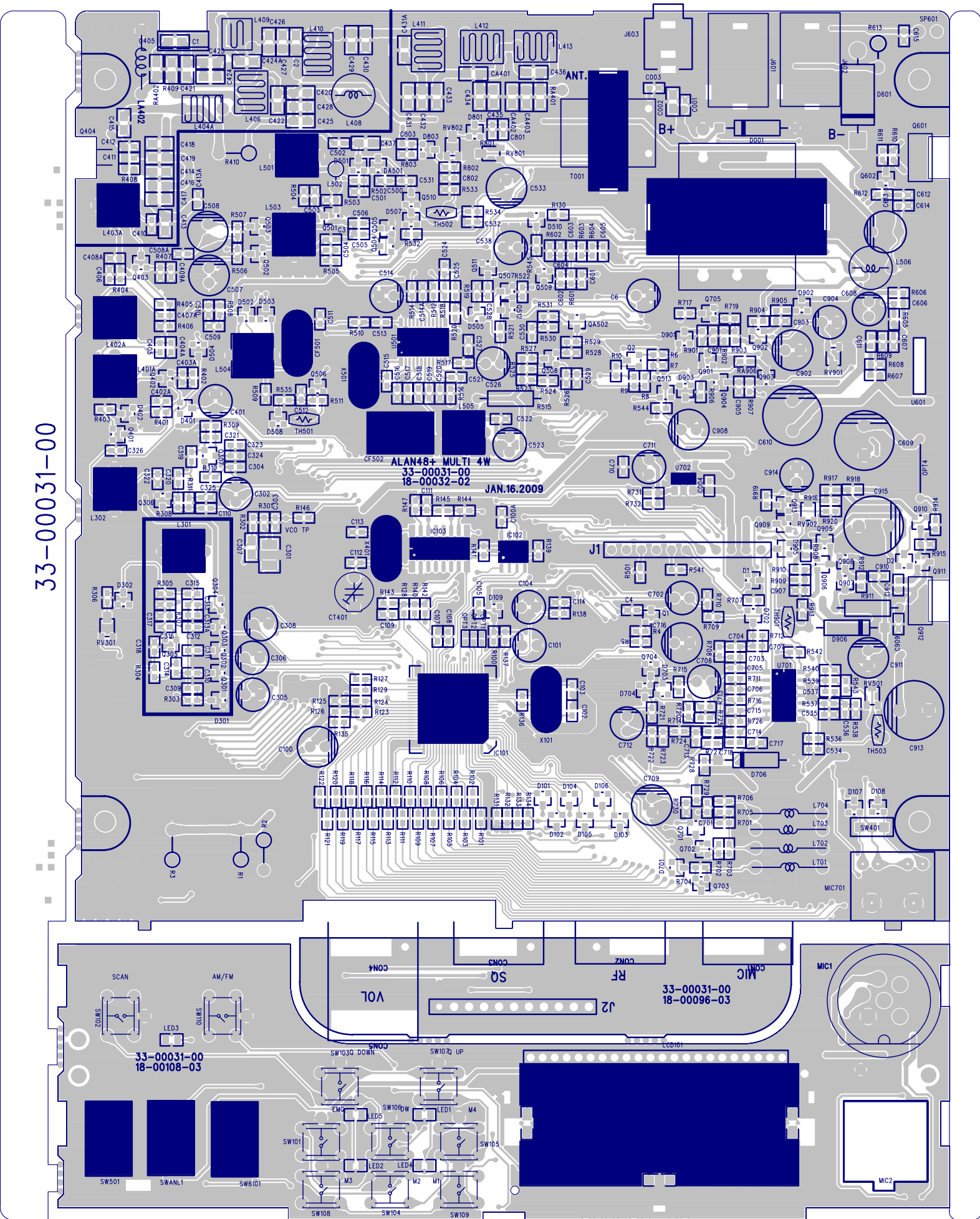


33-00031-00

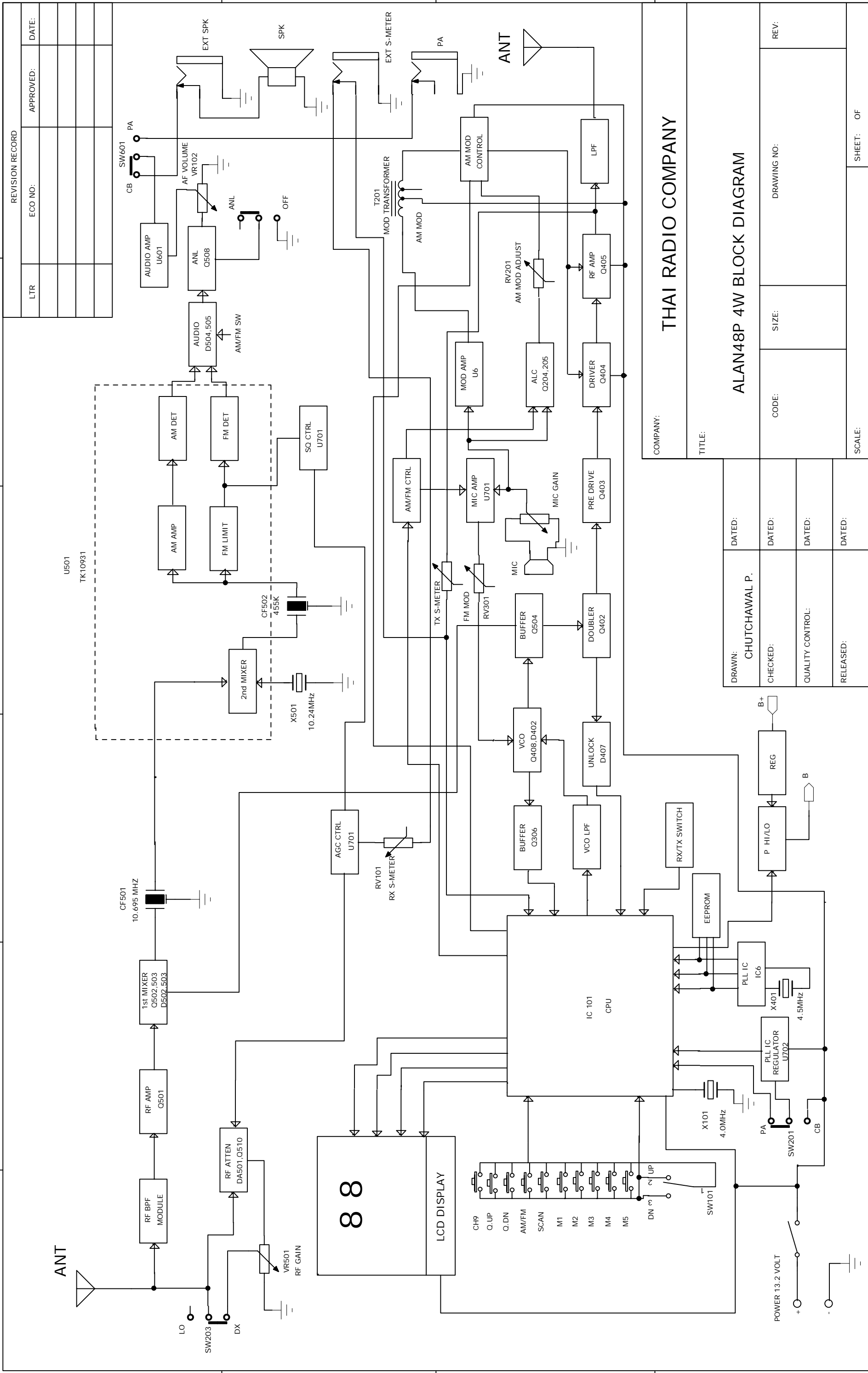
ALAN48+ MULTI 4W  
33-00031-00  
18-00032-02  
JAN.16.2009

33-00031-00  
18-00108-03

33-00031-00  
18-00096-03



6 5 4 3 2 1



REVISION RECORD			
LTR	ECO NO:	APPROVED:	DATE:

THAI RADIO COMPANY			
TITLE: ALAN48P 4W BLOCK DIAGRAM			
DRAWN:	DATED:	CODE:	SIZE:
CHUTCHAWAL P.			
CHECKED:	DATED:		DRAWING NO:
QUALITY CONTROL:	DATED:		REV:
RELEASED:	DATED:		SHEET: OF

## ALAN 48P 4W SMT MULTI CIRCUIT DESCRIPTION

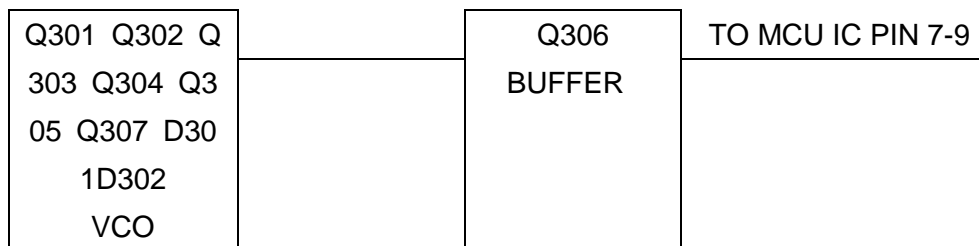
### INTRODUCTION

1. Multi BAND: Italy, Italy-34CH, Germany-80CH, Germany, Germany-80CH-40CH-4W Spain, Europe, CEPT, England, England-CEPT, Poland, Poland-400CH, Russia-400CH, France, Sweden

2. BLUE COLOR DISPLAY

3. THE FREQUENCIES FOR TRANSMITTER AND RECEIVER LOCAL FREQUENCIES ARE ALL DRIVEN FROM A SINGLE 10.240MHz CRYSTAL (X501) BY MEANS OF A PHASE LOCKED LOOP.

THE FIRST LOCAL OSCILLATOR FREQUENCIES ARE 14.915MHz (Poland-400CH CH.1) TO 20.875MHz (Sweden CH.24) FOR RECEIVER. THE SECOND LOCAL FREQUENCY IS FIXED AT 10.240MHz (X501) TO GENERATE SECOND IF 455 [KHz]. DURING TRANSMIT, THE VCO OF THE PLL OPERATES 12.805MHz TO 15.785MHz.



RX LOCAL FREQUENCY : 14.915MHz (Poland-400CH CH.1) TO 20.875MHz (Sweden CH. 24)

TX FREQUENCY : 12.805MHz TO 15.785MHz

THE VCO OPERATING FREQUENCY FOR THE RECEIVER IS 14.915MHz (Poland-400CH CH. 1) TO 12.805MHz (Sweden CH. 24) AS THE FIRST LOCAL OSCILLATOR, INJECTED THROUGH THE BUFFER AMP Q306 INTO THE FIRST TR MIXER Q502, Q503

### DESCRIPTIONS OF EACH BLOCK

#### INTRODUCTION

THE SYNTHESIZER IS IMPLEMENTED WITH THE FOLLOWING COMPONENTS : PLL IC (IC103), CRYSTAL (X401) VCO, VARICAP DIODE (D301)

THE IC 103 IS A HIGH PERFORMANCE DUAL FREQUENCY SYNTHESIZER WITH

TWO INTEGRATED HIGH FREQUENCY PRE-SCALARS FOR RF OPERATION

THE Q305,Q307,Q301-304,L301,C314,D301,C309,C316,C317,C319 ARE CLAP OSCILLATOR CIRCUIT TO OPERATE AS A VCO OF THE IC103.

THE Q304 IS A SWITCHING DIODE TO CONNECT OR DISCONNECT THE TUNING CAPACITOR IN THE VCO OSCILLATOR TANK CIRCUIT FOR TRANSMITTER OR RECEIVER.

THE Q306 WORKS AS A BUFFER AMP FOR RX LOCAL FREQUENCIES AND TX CARRIER GENERATING FREQUENCIES.

THE Q301-303 IS A SWITCHING DIODE TO CONNECT OR DISCONNECT THE TUNING CAPACITOR IN THE VCO OSCILLATOR TANK CIRCUIT FOR BAND SELECT.

#### **REFERENCE FREQUENCY (CRYSTAL)**

THE CRYSTAL, X401(4.5MHZ) AND OTHER COMPONENTS AS PIN.14 OF IC103 AND IC101 CAN MAKE A REFERENCE FREQUENCY OSCILLATOR WITH CK (Pin8), DATA (Pin9), EN (Pin7) TERMINALS IN IC103 ARE USED FOR MCU SERIAL DATA INTERFACE . THIS SET IS USED EXTERNAL CLOCK SOURCE BY THE CRYSTAL. THE REF\_FREQUENCY(4.5MHz) IS ADJUSTED BY CT401 EXACTLY.

#### **VCO**

THE Q305,307 AND SURROUNDING PARTS ARE CONSISTING A CLAPP OSCILLATOR WORKS AS A VCO OF IC103 WITH APPROPRIATE CONTROL VOLTAGE ON D301.THE VCO CAN BE OSCILLATE OVER THE REQUIRES RANGE OF 12.805MHz TO 20.875MHz .

#### **PHASE DETECTOR AND VCO CONTROL**

THE PHASE DETECTOR IS A DIGITAL PHASE COMPARATOR WHICH COMPARES THE PHASE OF THE REFERENCE SIGNAL WITH PROGRAMMABLE DIVIDER OUTPUT SQUARE WAVES AND DEVELOPS A SERIES OF PULSE WHOSE DC LEVEL DEPENDS ON THE PHASE ERROR OF EACH SIGNAL.

THE PHASE DETECTOR PULSE OUTPUT IS FED TO AN ACTIVE LOW PASS FILTER, AND FED TO VARICAP D301 CONTROL THE VCO FREQUENCY.

### **SWITCHING OF TUNING CAPACITOR IN VCO**

THE VCO CIRCUIT MUST USE WITH A WIDE RANGE OF FREQUENCIES 12.805 MHz TO 15.785MHz FOR TRANSMITTER AND 14.915MHz(CH.1) TO 20.875MHz FOR RECEIVER.

TO COMPLY ABOVE RANGE OF VCO, THE TUNING CAPACITANCE SHOULD SWITCHED FOR TRANSMISSION OR RECEPTION.

THE TUNING CIRCUIT CONSISTS WITH C313,Q304 WHEN THE VCO IS WORKING AS A RECEIVER, WHEN TRANSMITTING MODE, C313,Q304 BECOMES TURN ON. WHEN RECEIVING MODE, C313, Q304 BECOMES OFF,L301 AND THE D301 CAPACITANCE OF MAKE TUNING FUNCTION.

### **RECEIVER LOCAL OSCILLATOR OUTPUTS**

1ST MIXER : THE OUTPUT SINGLES OF Q305 IS INJECTED TO THE SOURCES OF 1ST MIXER Q502-503 IN THE 1ST IF MIXER SECTION.

2ND MIXER : THE OUTPUT OF 10.240MHz OSCILLATOR CIRCUIT WITH X501 IS INJECTED INTO THE U501. INCOMING IF SIGNAL AND 10.695MHz SIGNAL ARE MIXED INSIDE THE U501 TO EXTRACT 2ND IF SIGNAL 455 KHz.

### **DESCRIPTION OF OTHER CIRCUITS**

#### **TRANSMITTER**

##### **RF AMPLIFICATION**

THE OUTPUT OF BUFFER AMP Q402 IS FED THROUGH TUNING C326,L401A,L402A TO THE BASE OF PRE DRIVER AMP Q403. THE PRE DRIVER AMP OUTPUT SIGNAL FED THROUGH TO DRIVER AMP(Q404), FED THROUGH TO POWER AMP(Q405) TO THE ANTENNA.

##### **CIRCUIT FOR SUPPRESSION OF SPURIOUS RADIATION**

THE TUNING CIRCUIT BETWEEN THE OUTPUT OF FINAL AMP Q405 AND ANTENNA, 3 STAGE "LPF TYPE" NETWORK L409, L410, L411,L412,L413,LA401,C426, C427, C429, C430,C434,C435,C438,C439,CA401,RA401 SERVES AS A SPURIOUS RADIATION SUPPRESSOR.

THIS NETWORK ALSO SPURIOUS RADIATION SUPPRESSOR.

THIS NETWORK ALSO SERVES TO MATCH THE IMPEDANCE BETWEEN TX POWER TR Q405 AND ANTENNA.

### **MAXIMUM MODULATION CONTROL**

MODULATION SIGNALS ARE FILTERED WITH RC NETWORK AND GOES TO THE AUDIO\_AMP IC(U601) TO MAKE NOMINAL SIGNAL LEVEL TO ACHIEVE WANTED MODULATION. TO CONTROL INCOMING AUDIO SIGNAL BY ALC CIRCUIT. THE ALC ARE Q902, D902, RV901 THAT'S CIRCUIT CONTROL MAXIMUM MODULATION CAPABILITY AND MAXIMUM MODULATION LIMITING.

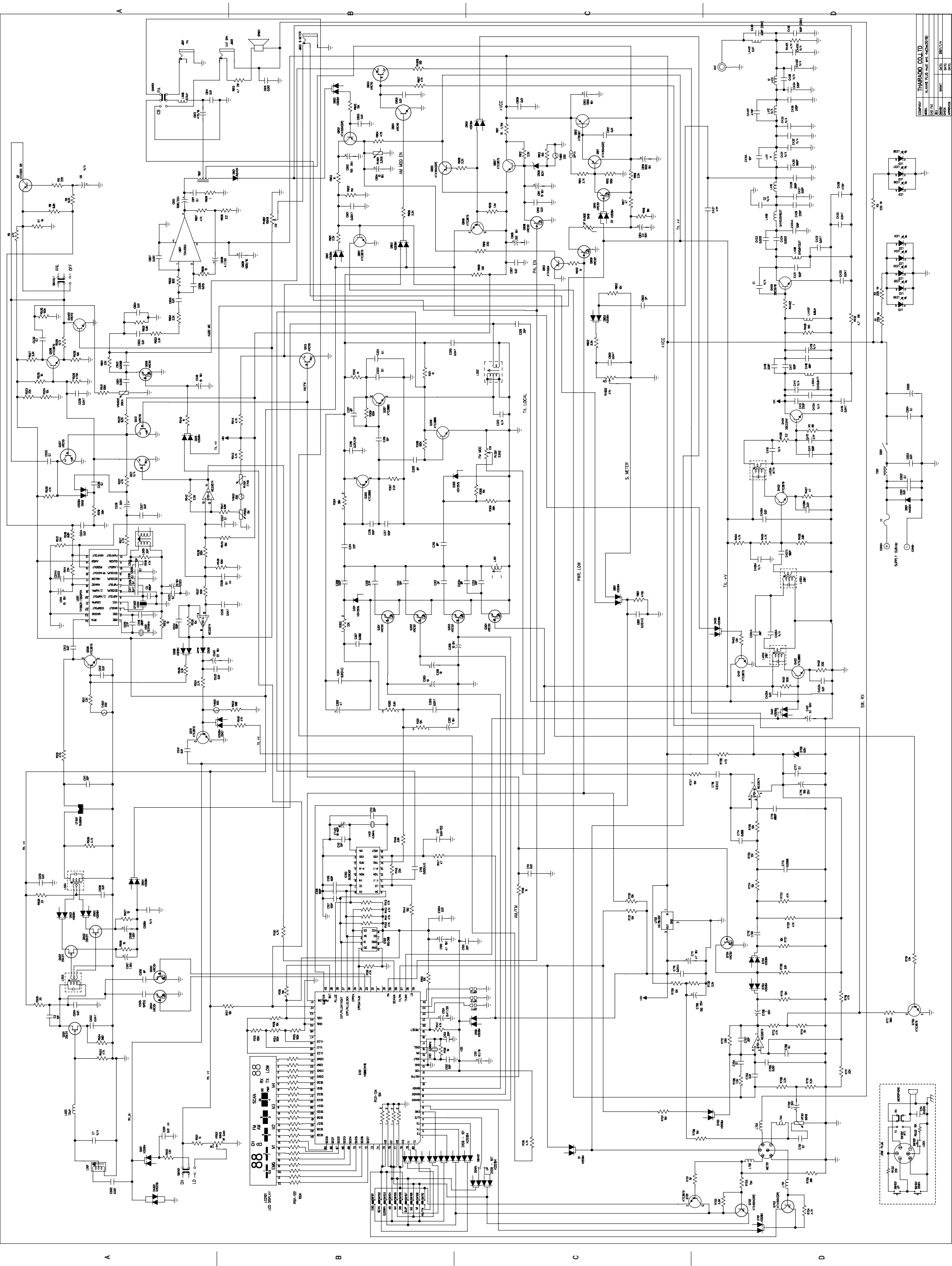
### **RECEIVER**

(1) RF AMP Q501 AMPLIFY RF SIGNAL FROM ANTENNA(Q505 Q506 BAND CONTROL), AND THEN THE AMPLIFIED RF SIGNAL IS FED THROUGH MIXER(Q502 Q503) TO THE BASE OF MIXER Q502 Q503, ALSO VCO SOURCE'S FREQUENCY LOWER 10.695MHz THAN THE FREQUENCY OF EACH CHANNEL IS SUPPLIED TO MIXER.

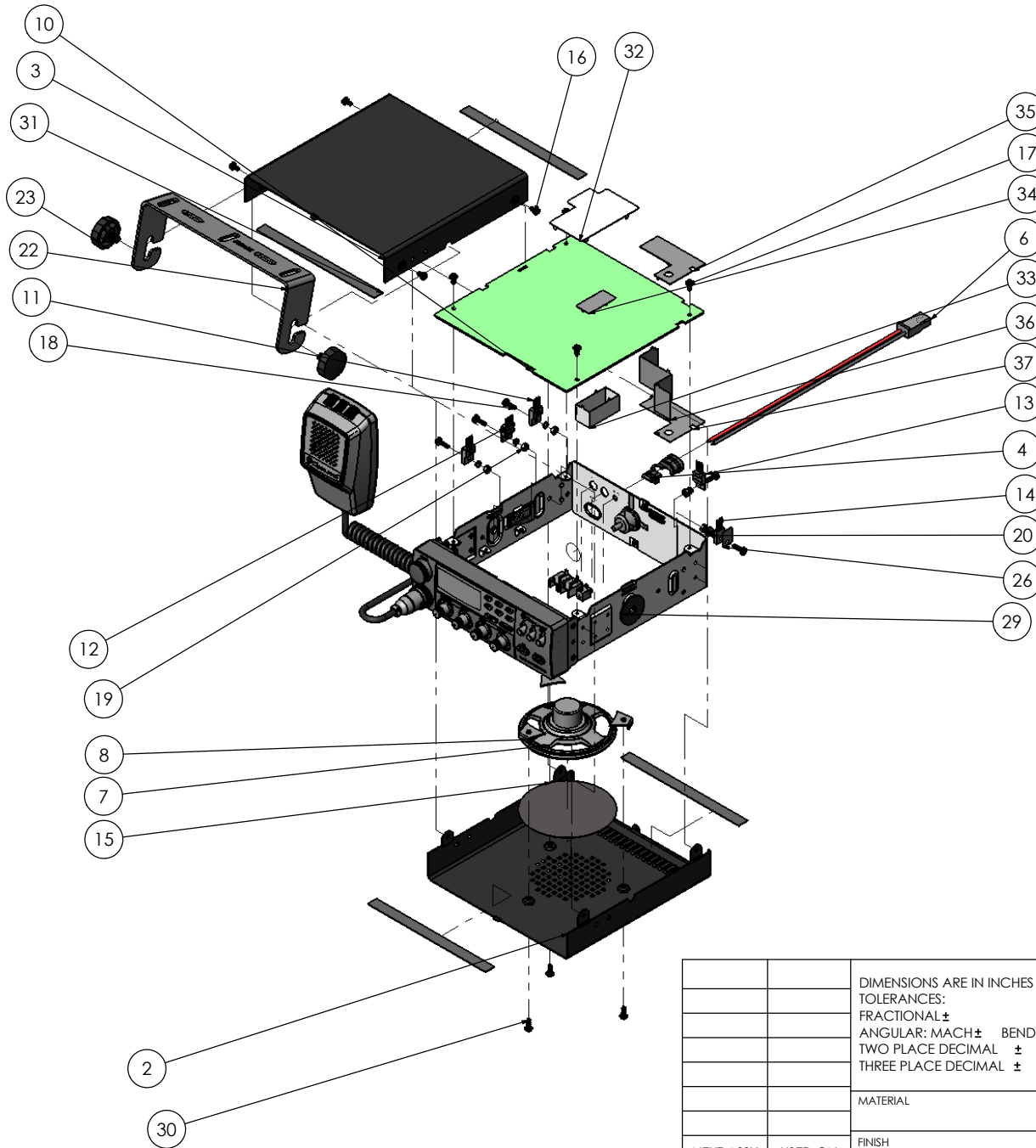
(2) THE SOURCE OF 10.695MHz FREQUENCY IS FED THROUGH CF501 TO 2'ND MIXER U501.

(3) THE 455 KHZ FREQUENCY SIGNAL IS PRODUCED FROM U501 BY MIXING THE OUTPUT SOURCE OF CF501 10.695MHz FILTER AND THE SOURCE OF 10.24MHz FREQUENCY FROM CRYSTAL OSCILLATOR X501.

(4) THE U501 IS IF AMP, AND D505(AM&FM) BOTH IS DETECT DIODE. AUDIO SIGNAL RECOVER BY THAT DIODE. THE AUDIO SIGNAL IS FED THROUGH C530 TO AUDIO POWER AMP(U601) FOR DRIVING SPEAKER.



COMPANY	THARADO CO., LTD.
MODEL	AL-48P (MULTI 4W)
DATE	1977/7/7
DESIGNER	
APPROVER	



ITEM NO.	PART NUMBER	DESCRIPTION	QTY.
1	70-00007-00	MAIN BODY EGI T=1.0	1
2	74-00007-00	bottom cover SPC+VIN.SHT.T0.75 BLK(ALA)	1
3	74-00006-01	UPPER COVER SECC+VINYL BLACK SHEET T=0.75MM	1
4	82-00014-00	CORD STOPPER PP	1
5	20-00002-00	JACK DC.SLDPRT	2
6	28-00000-00	MOLEX PLUG ASS'Y UL1015 / LENGTH 210MM. PITCH 2.5MM.	1
7	12-00000-83	SPEAKER YD077A008007P(ID)-R0304K	1
8	72-00001-00	HOLDER(SPK)EGI T1 USCOATING	3
9	20-00004-00	JACK MINIATURE FJ-2506 2.5MM	1
10	18-00033-02	P.C.B MAIN 146X153.5X1.6 FR4 1/1	1
11	03-00019-00	KTB1367 TRANSISTOR	2
12	10-00028-01	IC TDA2003H 5 LEG.SLDPRT	1
13	04-00003-00	RF POWER FET RD16HHF1	1
14	03-00036-00	TRANSISTOR 2SC2314(F)	1
15	90-00006-00	FELT & 77XT0.3	1
16	60-00064-02	(M3x6) TAP TITE	4
17	60-00053-02	(M3x6) Tapping screw	4
18	60-00028-01	(M3x10) Machine screw	5
19	62-00004-00	SS41 M3-1S ZN-PLAT	5
20	63-00014-00	WASHER SPRING M3 RoHS ZINC	5
21	63-00007-00	WASHER FIBER 7x7x3.2xT=1.0 RED	1
22	71-00009-00	BRACKET SPC T2 BLK-SPRAY	1
23	60-00003-03	SCREW(SECURING)	2
24	15-00005-01	CH-239(A) SW-1229.SLDPRT	1
25	60-00066-02	(+)TAP TITE SCREW BH 3X4-3S BLK	2
26	26-00001-00	MICA	1
27	85-00014-00	BUSHING	1
28	73-00003-00	HEAT SINK ALP3 13x26xT=2.0 MM.	1
29	63-00002-00	WASHER RUBB. & 7X&25XT1.5 BLK	2
30	60-00054-02	(+)TAPPING SCREW(BH) 3X8-2S BLK	3
31	90-00013-00	10X130XT0.5 FELT STIC.	4
32	50-00031-01	SHIELD PLATE ASS'Y ALAN 48 PLUS MULTI 46x64	1
33	76-00007-00	SHIELD HOUSHING SPT E T0.3 15*33*15	1
34	76-00008-00	SHIELD PLATE SPT E T0.3 15*30*0.3	1
35	76-00015-00	SHIELD PLATE SPT E T=0.3 40*53(with insul)	1
36	76-00012-00	SHIELD HOUSHING SPT E T0.3 39.5*53.5*25	1
37	76-00014-00	SHIELD PLATE SPT E T=0.3 40*53	1
38	explode view 48 plus multi4W (SMT)FRONT	SEE NEXT PAGE	1

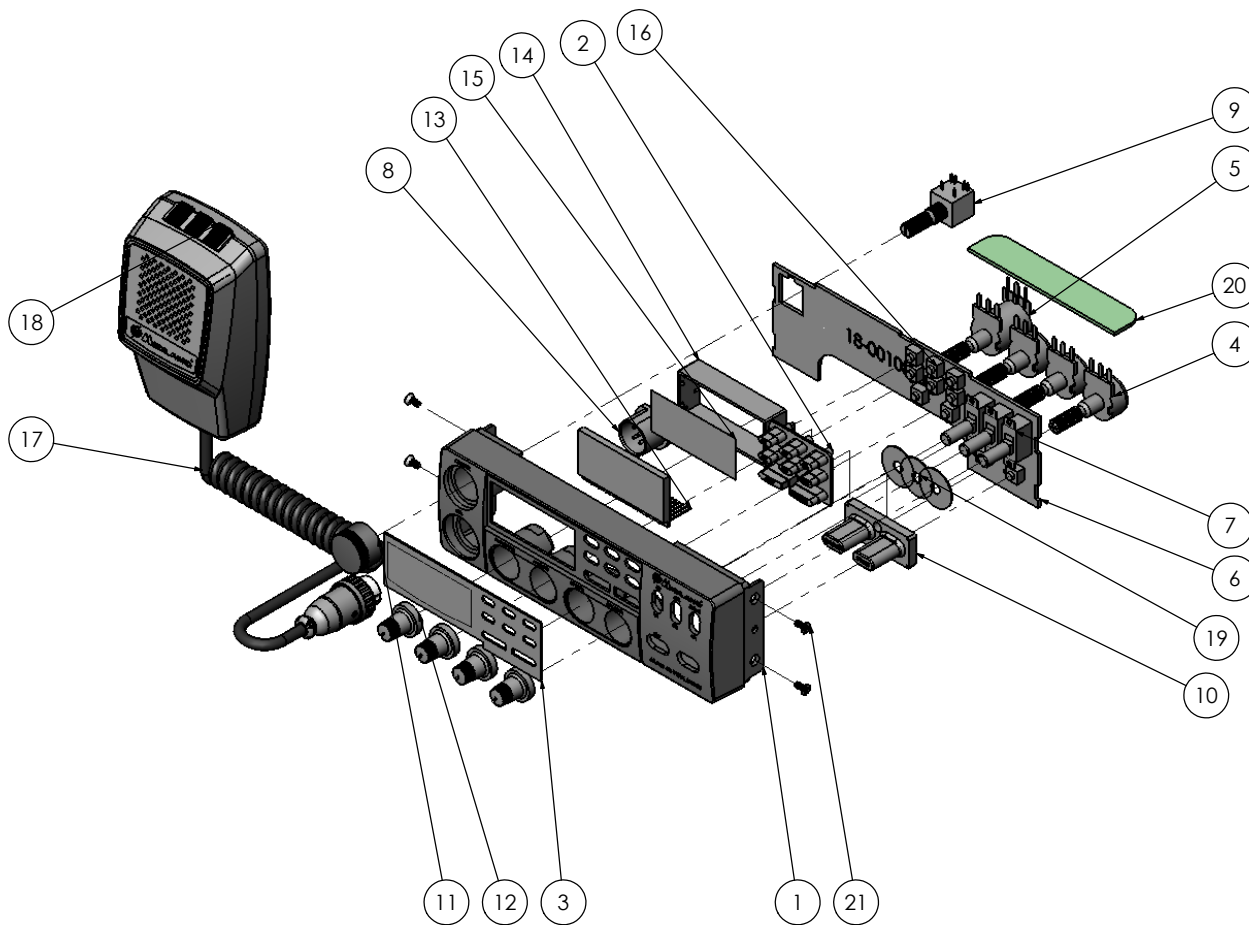
		DIMENSIONS ARE IN INCHES TOLERANCES: FRACTIONAL ± ANGULAR: MACH ± BEND ± TWO PLACE DECIMAL ± THREE PLACE DECIMAL ±
		MATERIAL
		FINISH ---
NEXT ASSY	USED ON	
APPLICATION		DO NOT SCALE DRAWING

	NAME	DATE
DRAWN	terdsak p.	09.DEC.08
CHECKED		
ENG APPR.		
MFG APPR.		
Q.A.		
COMMENTS:		


**Thai radio Co.,Ltd.**  
787 M.1, Banlane, A. Bang Pa-In  
Ayutthaya 13160  
Tel. 035-351-787-9, Fax.035-351-790

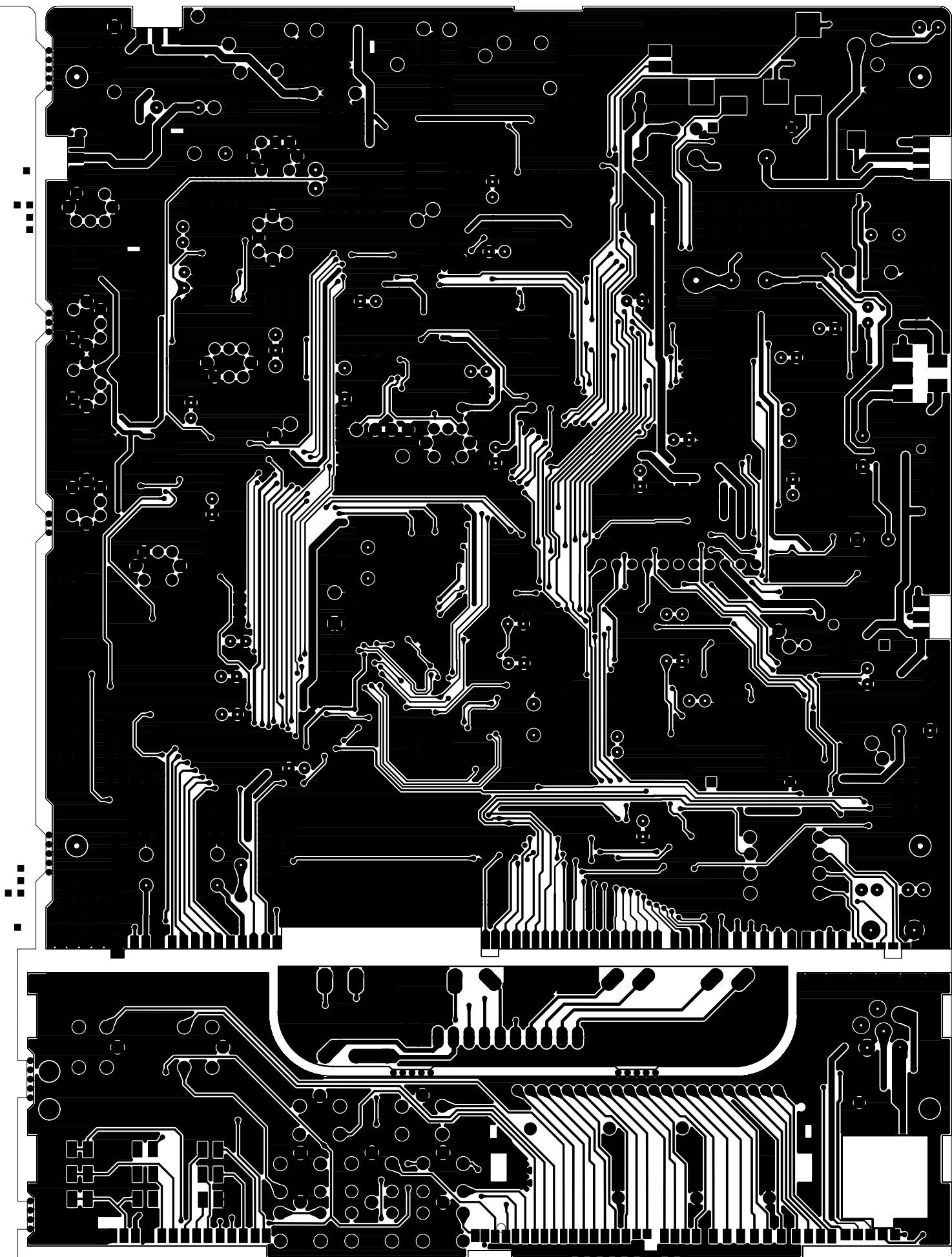
MODEL	ALAN 48 PLUS MUTI 4W SMT		
CUSTOMER	MIDLAND		
NAME&TITLE	EXPLODE VIEW		
SIZE	DWG. NO.		REV.
A			
SCALE:2:1	WEIGHT:		SHEET 1 OF 2

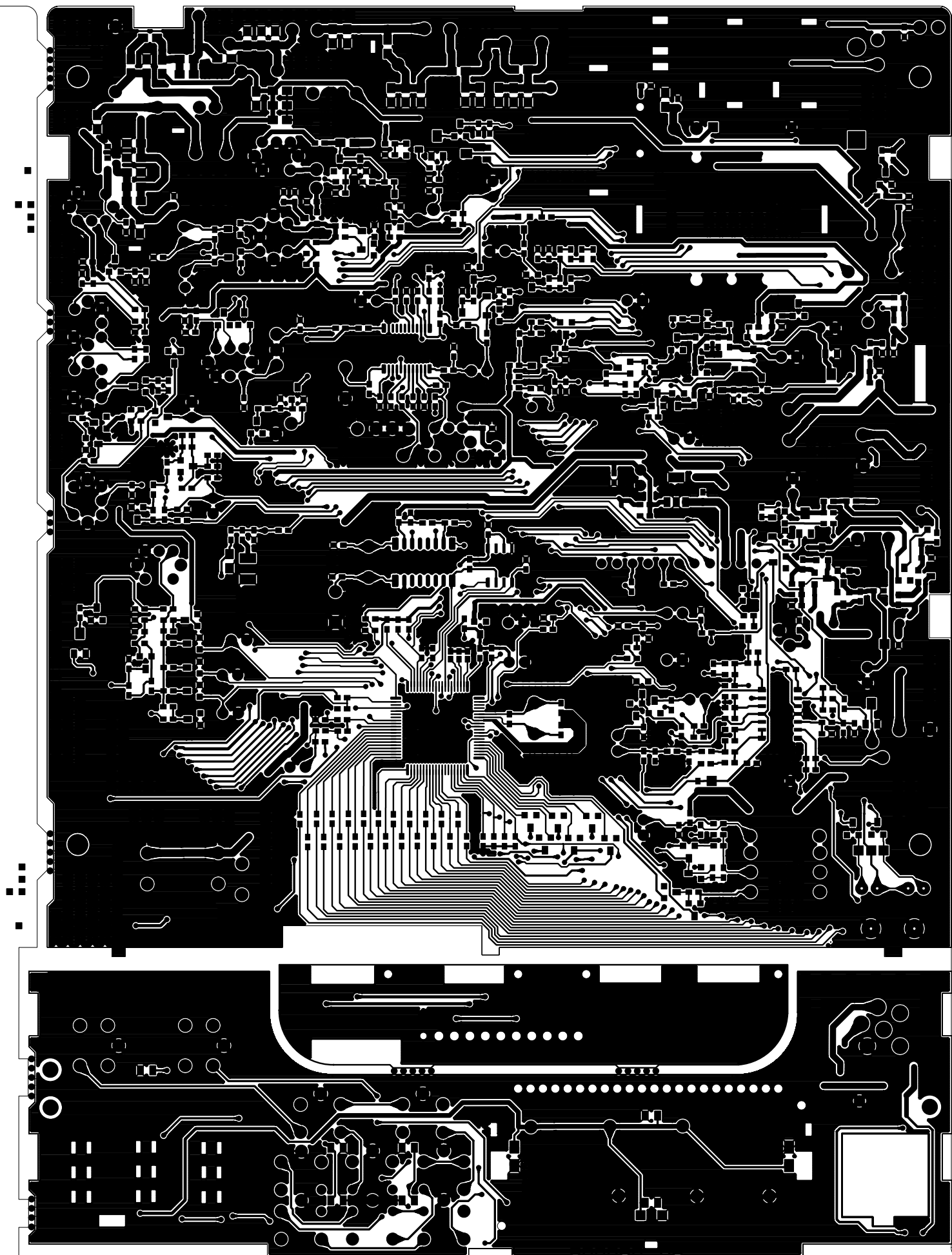




ITEM NO.	PART NUMBER	DESCRIPTION	QTY.
1	86-00005-01	E.S.C ABS94HB BLACK+SILK WHITE	1
2	87-00005-01	KEY PAD "A" SILICONE RUBBER 55'	1
3	84-00007-00	LENS LEXAN T=1 CLEAR	1
4	17-00103-01	POTENTIOMETER R1610N-4A1-B103-0H03	3
5	17-05503-01	50KA:K161110-5M1112 PCB T	1
6	18-00108-03	P.C.B SUB FRONT	1
7	32-00000-01	SWITCH SLIDE SKS-22021	3
8	15-00037-01	CONNECTOR SOCKET N-16-6R(PCB)-1 ASS'Y	1
9	32-00002-51	SW ROTARY SR10030F-20K-C7	1
10	87-00006-00	KEY PAD "B" SILICONE RUBBER 55'	1
11	83-00007-00	KNOB CH ABS 94HB BLK	1
12	83-00023-00	KNOB VOL ABS 94HB BLK	4
13	06-00004-41	LCD DISPLAY TCM-3064	1
14	81-00022-00	HOUSING LCD PC 141 WHT (ALAN 48PLUS)	1
15	91-00026-01	LED PLATE	1
16	32-00003-21	TM115AP SW TACT	10
17	mic pluge		1
18	AssemMic 248		1
19	90-00004-00	FELT BLACK 5x18xT=0.5MM.	3
20	18-00096-03	P.C.B SUB VOLUME	1
21	60-00009-01	[+MACHINE SCREW(FH)]2.6X5 ZN-PLAT	4

		DIMENSIONS ARE IN INCHES TOLERANCES: FRACTIONAL ± ANGULAR: MACH ± BEND ± TWO PLACE DECIMAL ± THREE PLACE DECIMAL ±		NAME <b>terdsak p.</b>	DATE <b>09.DEC.08</b>	 <b>Thai radio Co.,Ltd.</b> 787 M.1, Banlane, A. Bang Pa-In Ayutthaya 13160 Tel. 035-351-787-9, Fax.035-351-790
		MATERIAL		CHECKED		
		FINISH	---	ENG APPR.		CUSTOMER <b>MIDLAND</b>
NEXT ASSY	USED ON			MFG APPR.		NAME&TITLE EXPLODE VEIW
APPLICATION		DO NOT SCALE DRAWING		Q.A.		SIZE <b>A</b>
				COMMENTS:		DWG. NO.
						SCALE:1:5
						WEIGHT:
						REV.
						SHEET 2 OF 2





ELECTRICAL  
MECHANICAL  
S/W VERSION

P A R T S L I S T

MODEL CODE & NAME CBM237 ALAN 48PLUS MULTI 4W SMT

SEQ LEVEL	PART-NO.	NAME & DESCRIPTION		ICP	Q'TY	UT
1 2	<b>CBM237CO</b>	<b>COVER ASS'Y</b>				1,000 EA
3	12-00000-83	SPEAKER	YD077A008007P(ID)-R0304K	ICP	1,000	EA
3	60-00054-02	(+)TAPPING SCREW(BH)	3X8-2S BLK		3,000	EA
3	60-00064-02	(+)TAP TITE SCREW BH	3X6 BLK		4,000	EA
3	60-00066-02	(+)TAP TITE SCREW BH	3X4-3S BLK		2,000	EA
3	74-00006-01	UPPER COVER	PCM BLACK T=0.8MM		1,000	EA
3	74-00007-01	COVER BOTTOM	PCM BLACK T=0.8MM		1,000	EA
3	72-00001-00	HOLDER(SPK)	EGI T1 USCOATING	ICP	3,000	EA
3	90-00006-00	FELT	FELT Ø77xT=0.15MM	ICP	1,000	EA
3	90-00013-00	FELT	10X130XT0.5 FELT STIC.	ICP	4,000	EA
2 2	<b>CBM237ESC</b>	<b>ESCUTCHEON ASS'Y</b>				1,000 EA
3	32-00002-51	SW ROTARY	SR10030F-20K-C7	ICP	1,000	EA
3	17-00103-01	POTENTIOMETER	R1610N-4A1-B103-0H03	ICP	1,000	EA
3	17-05503-01	VR	50KA:K161110-5M1112 PCB T	ICP	1,000	EA
3	17-06503-01	POTENTIOMETER	R1610N-4A1-B503-0H03	ICP	2,000	EA
3	60-00009-01	(+)MACHINE SCREW(FH)	2.6X5 ZN-PLAT	ICP	4,000	EA
3	86-00005-01	E.S.C	ABS94HB BLACK+SILK WHITE	ICP	1,000	EA
3	84-00007-00	LENS	PC CLEAR 27X87.6XT=0.8MM.	ICP	1,000	EA
3	83-00023-00	KNOB VOL	ABS 94HB BLK	ICP	4,000	EA
3	83-00007-00	KNOB CH	ABS 94HB BLK	ICP	1,000	EA
3	87-00005-01	KEY PAD "A"	SILICONE RUBBER 55'		1,000	EA
3	87-00006-00	KEY PAD "B"	SILICONE RUBBER 55'		1,000	EA
3	90-00004-00	FELT	FELT BLACK Ø5xØ18xT=0.5MM.		3,000	EA
3 2	<b>CMB237MB</b>	<b>MAIN BODY ASS'Y</b>				1,000 EA
3	03-00019-00	TRANSISTOR	KTB1367	ICP	1,000	EA
3	10-00028-01	I.C	TDA2003V	ICP	1,000	EA
3	03-00035-00	TRANSISTOR	2SC2078(F)	ICP	1,000	EA
3	03-00036-00	TRANSISTOR	2SC2314(F)	ICP	1,000	EA
3	20-00002-00	JACK DC	TC38-078-01	ICP	2,000	EA
3	20-00004-00	JACK MINIATURE	FJ-2506 2.5MM	ICP	1,000	EA

3	15-00005-01	CONNECTOR	SWCN-1601	ICP	1,000 EA
3	15-00037-01	CONNECTOR SOCKET	N-16-6R(PCB)-1 ASS'Y	ICP	1,000 EA
3	16-00010-00	FLAT WIRE CABLE	11PIN 88MM 2.5PITCH	ICP	1,000 EA
3	26-00001-00	MICA	MICA 13x15xT=0.3MM		2,000 EA
3	28-00000-00	MOLEX PLUG ASS'Y	UL1015 / LENGTH 210MM. PITCH 2.5MM.	ICP	1,000 EA
3	50-00031-01	SHIELD PLATE ASS'Y	ALAN 48 PLUS MULT1	ICP	1,000 EA
4	76-00035-00	SHIELD PLATE A	SPTT TO.3	ICP	1,000 EA
4	91-00021-00	INSULATION PLATE	INSULATION PAPER 45X63XT0	ICP	1,000 EA
3	60-00028-01	MACHINE SCREW	1010 M3x10 RoHS ZINC	ICP	4,000 EA
3	60-00044-02	TAPING SCREW	1010 M2.6x8 RoHS ZINC	ICP	2,000 EA
3	60-00053-02	TAPPING SCREW	1010 M3x6 RoHS ZINC	ICP	4,000 EA
3	62-00004-00	NUT	CARBON STEEL M3 RoHS ZINC	ICP	4,000 EA
3	63-00007-00	WASHER FIBER	Ø7xØ3.2xT=1.0 RED	ICP	1,000 EA
3	63-00014-00	WASHER SPRING	CARBON STEEL M3 RoHS ZINC	ICP	4,000 EA
3	70-00007-00	MAIN BODY	EGI T=1.0	ICP	1,000 EA
3	81-00022-00	HOUSING LCD	PC 141 WHT (ALAN 48PLUS)	ICP	1,000 EA
3	72-00009-01	HOLDER LCD	SPTT T0.3 (BLK PLATE)	ICP	1,000 EA
3	73-00003-00	HEAT SINK	ALP3 13x26xT=2.0 MM.	ICP	1,000 EA
3	76-00007-00	SHIELD HOUSHING	SPTT T0.3	ICP	1,000 EA
3	76-00008-00	SHIELD PLATE	SPTT T0.3	ICP	1,000 EA
3	76-00012-00	SHIELD HOUSING	SPTT T0.3	ICP	1,000 EA
3	76-00014-00	SHIELD PLATE	SPTT T=0.3	ICP	1,000 EA
3	76-00015-00	SHIELD PLATE	SPTT T0.3	ICP	1,000 EA
3	82-00014-00	CORD STOPPER	PP	ICP	1,000 EA
3	85-00014-00	BUSHING	NYLON66+GLASS		1,000 EA
3	90-00009-00	FELT	8x45xT=0.3MM FELT STICKER	ICP	1,000 EA
3	91-00006-00	INSULATION PLATE	INSULATION PAPER T=0.25MM.	ICP	1,000 EA
3	91-00026-04	LED PLATE	47.8x22.6xT=0.25 PC CYAN+TAPE	ICP	1,000 EA
4 2	CBM237MA	MIC ASS'Y			
3	00-00103-00	FILM RESISTOR	10K 1/ 8W 5% ST	ICP	1,000 EA
3	00-00223-00	FILM RESISTOR	22K 1/ 8W 5% ST	ICP	1,000 EA
3	01-00001-01	DISK CERAMIC	0.001UF F 102Z 50	ICP	1,000 EA
3	18-00022-03	P.C.B MIC	39 X13 X1.6 XPC-94HB	ICP	1,000 EA
3	13-00000-00	MIC CONDENSER	HZ9765502	ICP	1,000 EA
3	24-00001-00	CORD CURLED	19/0.10x5C+35/0.10BC CURLED CORD OD:5.8 L=370MM.	ICP	1,000 EA
3	15-00006-01	MIC CONNECTOR	MIC-6PIN(P) SW-1561	ICP	1,000 EA
3	32-00005-11	PUSH SWITCH	SKPS-2210C	ICP	1,000 EA

3	32-00003-21	SW TACT	TM115AP	ICP	3,000	EA
3	60-00005-03	(-)SECURING SCREW	ABS M6X8(P:1)BLK	ICP	2,000	EA
3	60-00036-02	TAPING SCREW	M2.6x12 NICKEL PLATE	ICP	4,000	EA
3	60-00038-02	TAPPING SCREW	M2.6x8 ZINC PLATE	ICP	3,000	EA
3	60-00056-02	(+)TAPPING SCREW(BH)	3X10-2S NI-PLAT	ICP	2,000	EA
3	60-00061-02	(+)TAPPING SCREW(TH)	5X12-1S ZN-PLAT	ICP	3,000	EA
3	60-00069-02	WOOD SCREW	M2.6x14 NICKEL PLATE	ICP	1,000	EA
3	63-00002-00	WASHER	RUBB.&7X&25XT1.5 BLK	ICP	2,000	EA
3	63-00020-00	WASHER(LOCK"B"TYPE)	M3 NI-PLAT	ICP	2,000	EA
3	63-00022-00	WASHER(LOCK"B"TYPE)	M5 ZN-PLAT	ICP	3,000	EA
3	81-00008-00	COVER UPPER	ABS 94HB BLK	ICP	1,000	EA
3	81-00009-00	COVER BOTTOM(MIC)	ABS 94HB BLK	ICP	1,000	EA
3	71-00002-00	BRACKET(MIC)	SKD-5 CR-PLAT	ICP	1,000	EA
3	71-00009-00	BRACKET	SPC T2 BLK-SPRAY	ICP	1,000	EA
3	82-00001-00	HOLDER(MIC)	PC BLK	ICP	1,000	EA
3	82-00010-00	LEVER(MIC)	PC BLACK	ICP	1,000	EA
3	95-00003-00	NAME PLATE(MIC)	ALP3 11X36XT=0.4MM.	ICP	1,000	EA
3	95-00015-00	NAME PLATE(MIC)	PVC 12.8x23.9xT0.4 CLEAR	ICP	1,000	EA
3	83-00005-00	KNOB (MIC)	ABS 94HB BLK	ICP	3,000	EA
3	85-00003-00	BEZEL	ABS94HB WHT SILVER SPRAY	ICP	1,000	EA
3	85-00011-00	GRILL CAP	ABS 94HB L380-9001 BLK	ICP	1,000	EA
3	85-00024-00	WIRE CLAMP (CORD)	NYLON	ICP	1,000	EA
3	89-00009-00	RUBBER SPONGE	RUBBER SPONGE 9x38xT2.0 BLK	ICP	0,500	EA
3	89-00013-00	CUSHION	Ø22xT4 SPONGE STICKER	ICP	1,000	EA
3	89-00028-00	RUBBER	RUBBER BLACK Ø9.5XØ30XT18.2MM.	ICP	1,000	EA
3	90-00005-00	FELT	FELT 34x36xT=0.15MM	ICP	1,000	EA
3	98-00005-02	CELLOPHANE	P.P CELLOPHANE 100X100XT0.05MM.	ICP	2,000	EA
3	98-00013-03	CELLOPHANE	P.P CELLOPHANE 100X200XT0.05MM.	ICP	1,000	EA
5 2	CBM237MBM	MAIN BOARD MANUAL ASS'Y				1,000 EA
3	00-00100-01	FILM RESISTOR	10 1/ 4W 5% ST	ICP	2,000	EA
3	00-00221-80	METAL OXIDE RESISTOR	220 1W 5% ST	ICP	3,000	EA
3	00-00479-81	METAL OXIDE RESISTOR	4.7 2W 5% ST	ICP	2,000	EA
3	01-00029-01	DISK CERAMIC	150PF NPO K% 50	ICP	1,000	EA
3	01-00060-01	DISK CERAMIC	330PF NPO331K 50	ICP	1,000	EA
3	01-00002-41	TRIMMER	HCV06C200 (20PF)	ICP	1,000	EA
3	08-00001-41	FILTER CRYSTAL	HC49/T (10.695M)	ICP	1,000	EA
3	08-00003-01	CERAMIC FILTER	LT455HTW	ICP	1,000	EA

3	07-00001-01	CRYSTAL	10.240MHZ 30PPM 32PF	ICP	1,000 EA
3	07-00006-01	CRYSTAL	4.50MHZ 30PPM 16PF	ICP	1,000 EA
3	08-00001-21	RESONATOR CERAMIC	ZTA4.0MG	ICP	1,000 EA
3	02-00031-81	COIL IFT	27MHZ Z073I-1	ICP	1,000 EA
3	02-00002-31	COIL AXIAL	AL0307-6R8J (6.8uH +/-5%)	ICP	5,000 EA
3	02-00013-31	COIL AXIAL	1.5UH ±10%	ICP	1,000 EA
3	02-00028-81	COIL IFT	16.5MHZ 82PF COIL VCO	ICP	1,000 EA
3	02-00043-81	COIL IFT	27MHZ RX (7RC)	ICP	1,000 EA
3	02-00024-81	COIL IFT	10.7MHZ MAX RX	ICP	1,000 EA
3	02-00017-81	COIL	455KHZ DET	ICP	1,000 EA
3	02-00021-81	Z73C-359	Z73C-359	ICP	2,000 EA
3	02-00026-81	COIL IFT	37MHZ TX	ICP	1,000 EA
3	02-00001-01	TRANSFORMER	EI-28 (OPT)	ICP	1,000 EA
3	02-00007-01	TRANSFORMER	EI-19	ICP	1,000 EA
3	02-00027-81	COIL IFT	15MHZ TX/RX	ICP	1,000 EA
3	02-00003-21	COIL SPRING	6X0.8X5.5T:R	ICP	1,000 EA
3	02-00004-21	COIL SPRING	2.5X0.8X7T:R	ICP	1,000 EA
3	02-00005-21	COIL SPRING	5.2X0.7X7T:R	ICP	1,000 EA
3	02-00006-21	COIL SPRING	5X0.6X13.5T:R	ICP	1,000 EA
3	02-00010-21	COIL SPRING	4.0X0.5X7T:R	ICP	1,000 EA
3	02-00017-21	COIL SPRING	3.4X0.55X8.5T:R	ICP	1,000 EA
3	02-00009-11	COIL CHOKE	6.5UH	ICP	1,000 EA
3	51-00003-01	6.5T SPRING COIL ASS	6.5T3.4X.55:M9D3.7X6	ICP	1,000 EA
4	02-00015-21	COIL SPRING	3.4X0.55X6.5T:R	ICP	1,000 EA
4	02-00002-A1	CORE	1108-KA-058 M9DTH3.7X6	ICP	1,000 EA
3	00-00201-70	THERMISTOR DISK	200 OHM 15%:KC5B120L	ICP	3,000 EA
3	00-00501-70	THERMISTOR DISK	500 OHM	ICP	1,000 EA
3	05-00000-31	DIODE RECTIFIER	1N5404	ICP	1,000 EA
3	05-00001-31	DIODE RECTIFIER	1N4004	ICP	1,000 EA
3	05-00011-01	ZENER DIODE	1N5237B (8.2V)	ICP	1,000 EA
3	05-00012-01	ZENER DIODE	1N5235B (6.8V)	ICP	1,000 EA
3	06-00004-41	LCD DISPLAY	TCM-3064	ICP	1,000 EA
3	01-00000-11	ELECT CAPACITOR	0.1UF 50V 20% 5X11	ICP	2,000 EA
3	01-00010-11	ELECT CAPACITOR	1000UF 16V 10X16	ICP	3,000 EA
3	01-00042-11	ELECT CAPACITOR (NP)	1000UF 25V 20% 13X20	ICP	1,000 EA
3	01-00006-11	ELECT CAPACITOR	10UF 16V 20% 5X11	ICP	8,000 EA
3	01-00013-11	ELECT CAPACITOR	100UF 25V 20% 6.3X11	ICP	4,000 EA

3	01-00004-11	ELECT CAPACITOR	1UF	50V 20% 5X11	ICP	6,000 EA
3	01-00017-11	ELECT CAPACITOR	2.2UF	50V 20% 5X11	ICP	1,000 EA
3	01-00018-11	ELECT CAPACITOR	22UF	16V 20% 5X11	ICP	1,000 EA
3	01-00003-11	ELECT CAPACITOR	0.47UF	50V 20% 5X11	ICP	1,000 EA
3	01-00029-11	ELECT CAPACITOR	4.7UF	50V 20% 5X11	ICP	1,000 EA
3	01-00038-11	ELECT CAPACITOR	47UF	16V 20% 5X7	ICP	3,000 EA
3	01-00036-11	ELECT CAPACITOR	470UF	16V 20% 8X12	ICP	1,000 EA
3	92-00012-00	COPPER TAPE	COPPER TAPE T=0.1x16x36.3		ICP	2,000 EA
6 2	CBM237MBS	MAIN BOARD SMD ASS'Y				1,000 EA
3	00-001R0-15	CHIP RESISTOR	1	1/16W 5% T 1608	ICP	1,000 EA
3	00-00109-1D	CHIP RESISTOR	1	1/10W 5% T 2012	ICP	1,000 EA
3	00-00100-15	CHIP RESISTOR	10	1/16W 5% T 1608	ICP	4,000 EA
3	00-00101-15	CHIP RESISTOR	100	1/16W 5% T 1608	ICP	3,000 EA
3	00-00102-15	CHIP RESISTOR	1K	1/16W 5% T 1608	ICP	8,000 EA
3	00-00103-15	CHIP RESISTOR	10K	1/16W 5% T 1608	ICP	18,000 EA
3	00-00104-15	CHIP RESISTOR	100K	1/16W 5% T 1608	ICP	33,000 EA
3	00-00105-15	CHIP RESISTOR	1M	1/16W 5% T 1608	ICP	4,000 EA
3	00-00106-15	CHIP RESISTOR	10M	1/16W 5% T 1608	ICP	1,000 EA
3	00-00155-15	CHIP RESISTOR	1.5M	1/16W 5% T 1608	ICP	1,000 EA
3	00-00122-15	CHIP RESISTOR	1.2K	1/16W 5% T 1608	ICP	1,000 EA
3	00-00123-15	CHIP RESISTOR	12K	1/16W 5% T 1608	ICP	2,000 EA
3	00-00151-15	CHIP RESISTOR	150	1/16W 5% T 1608	ICP	1,000 EA
3	00-00151-1D	CHIP RESISTOR	150	1/10W 5% T 2012	ICP	1,000 EA
3	00-00152-15	CHIP RESISTOR	1.5K	1/16W 5% T 1608	ICP	4,000 EA
3	00-00153-15	CHIP RESISTOR	15K	1/16W 5% T 1608	ICP	4,000 EA
3	00-00154-15	CHIP RESISTOR	150K	1/16W 5% T 1608	ICP	1,000 EA
3	00-00183-15	CHIP RESISTOR	18K	1/16W 5% T 1608	ICP	2,000 EA
3	00-00221-15	CHIP RESISTOR	220	1/16W 5% T 1608	ICP	2,000 EA
3	00-00202-15	CHIP RESISTOR	2K	1/16W 5% T 1608	ICP	1,000 EA
3	00-00222-15	CHIP RESISTOR	2.2K	1/16W 5% T 1608	ICP	13,000 EA
3	00-00220-15	CHIP RESISTOR	22	1/16W 5% T 1608	ICP	2,000 EA
3	00-00223-15	CHIP RESISTOR	22K	1/16W 5% T 1608	ICP	5,000 EA
3	00-00225-15	CHIP RESISTOR	2.2M	1/16W 5% T 1608	ICP	1,000 EA



3	00-00229-15	CHIP RESISTOR	2.2 1/16W 5% T 1608	ICP	1,000 EA
3	00-00243-15	CHIP RESISTOR	24K 1/16W 5% T 1608	ICP	1,000 EA
3	00-00272-15	CHIP RESISTOR	2.7K 1/16W 5% T 1608	ICP	1,000 EA
3	00-00330-15	CHIP RESISTOR	33 1/16W 5% T 1608	ICP	2,000 EA
3	00-00332-15	CHIP RESISTOR	3.3K 1/16W 5% T 1608	ICP	4,000 EA
3	00-00333-15	CHIP RESISTOR	33K 1/16W 5% T 1608	ICP	2,000 EA
3	00-00335-15	CHIP RESISTOR	3.3M 1/16W 5% T 1608	ICP	1,000 EA
3	00-00392-15	CHIP RESISTOR	3.9K 1/16W 5% T 1608	ICP	2,000 EA
3	00-00393-15	CHIP RESISTOR	39K 1/16W 5% T 1608	ICP	2,000 EA
3	00-00470-15	CHIP RESISTOR	47 1/16W 5% T 1608	ICP	3,000 EA
3	00-00471-15	CHIP RESISTOR	470 1/16W 5% T 1608	ICP	3,000 EA
3	00-00472-15	CHIP RESISTOR	4.7K 1/16W 5% T 1608	ICP	9,000 EA
3	00-00473-15	CHIP RESISTOR	47K 1/16W 5% T 1608	ICP	18,000 EA
3	00-00474-15	CHIP RESISTOR	470K 1/16W 5% T 1608	ICP	2,000 EA
3	00-00561-15	CHIP RESISTOR	560 1/16W 5% T 1608	ICP	2,000 EA
3	00-00562-15	CHIP RESISTOR	5.6K 1/16W 5% T 1608	ICP	1,000 EA
3	00-00563-15	CHIP RESISTOR	56K 1/16W 5% T 1608	ICP	3,000 EA
3	00-00682-15	CHIP RESISTOR	6.8K 1/16W 5% T 1608	ICP	4,000 EA
3	00-00752-15	CHIP RESISTOR	7.5K 1/16W 5% T 1608	ICP	1,000 EA
3	00-00821-15	CHIP RESISTOR	820 1/16W 5% T 1608	ICP	1,000 EA
3	00-00822-15	CHIP RESISTOR	8.2K 1/16W 5% T 1608	ICP	2,000 EA
3	01-00072-00	CHIP CERAMIC	0.01UF GRM39 X7R103K 25	ICP	32,000 EA
3	01-00074-00	CHIP CERAMIC	0.001UF GRM39 X7R102K 50	ICP	5,000 EA
3	01-00077-00	CHIP CERAMIC	0.1UF GRM39 X7R104K 16	ICP	19,000 EA
3	01-00063-00	CHIP CERAMIC	0.0012UF GRM40 X7R122K 50	ICP	2,000 EA
3	01-00059-00	CHIP CERAMIC	0.015UF GRM39 X7R153K 25	ICP	1,000 EA
3	01-00005-00	CHIP CERAMIC	0.022UF GRM39 X7R223K 50	ICP	1,000 EA
3	01-00021-00	CHIP CERAMIC	0.033UF GRM39 X7R333K 16	ICP	1,000 EA
3	01-00030-00	CHIP CERAMIC	0.0047UF GRM39 X7R472K 50	ICP	1,000 EA
3	01-00031-00	CHIP CERAMIC	0.047UF GRM39 Y5V473Z 25	ICP	7,000 EA
3	01-00028-00	CHIP CERAMIC	0.047UF GRM40 X7R473K 50	ICP	5,000 EA
3	01-00317-00	CHIP CERAMIC	0.47UF GRM39 Y5V474K 16	ICP	1,000 EA
3	01-00055-00	CHIP CERAMIC	0.068UF GRM39 X7R683K 16	ICP	1,000 EA

3	01-00047-00	CHIP CERAMIC	0.068UF GRM40 X7R683K 50	ICP	1,000 EA
3	01-00048-00	CHIP CERAMIC	0.0068UF GRM39 X7R682J 50	ICP	2,000 EA
3	01-00094-00	CHIP CERAMIC	10PF GRM39 COG100D 50	ICP	3,000 EA
3	01-00095-00	CHIP CERAMIC	100PF GRM39 COG101J 50	ICP	7,000 EA
3	01-00087-00	CHIP CERAMIC	100PF GRM40 COG101J 50	ICP	1,000 EA
3	01-00100-00	CHIP CERAMIC	120PF GRM40 COG121J 50	ICP	1,000 EA
3	01-00129-00	CHIP CERAMIC	15PF GRM39 COG150J 50	ICP	3,000 EA
3	01-00125-00	CHIP CERAMIC	150PF GRM40 COG151J 50	ICP	1,000 EA
3	01-00130-00	CHIP CERAMIC	150PF GRM39 COG151J 50	ICP	2,000 EA
3	01-00143-00	CHIP CERAMIC	180P GRM39 COG181J 50	ICP	1,000 EA
3	01-00147-00	CHIP CERAMIC	2PF GRM39 COG020C 50	ICP	1,000 EA
3	01-00148-00	CHIP CERAMIC	20PF GRM39 COG200J 50	ICP	3,000 EA
3	01-00158-00	CHIP CERAMIC	22PF GRM39 COG220J 50	ICP	1,000 EA
3	01-00155-00	CHIP CERAMIC	220PF GRM40 COG221J 50	ICP	2,000 EA
3	01-00174-00	CHIP CERAMIC	27PF GRM39 COG270J 50	ICP	2,000 EA
3	01-00169-00	CHIP CERAMIC	270PF GRM40 COG271J 50	ICP	1,000 EA
3	01-00180-00	CHIP CERAMIC	3PF GRM39 COG030C 50	ICP	1,000 EA
3	01-00182-00	CHIP CERAMIC	30PF GRM39 COG300J 50	ICP	5,000 EA
3	01-00201-00	CHIP CERAMIC	39PF GRM39 COG390J 50	ICP	1,000 EA
3	01-00187-00	CHIP CERAMIC	330PF GRM40 COG331J 50	ICP	4,000 EA
3	01-00200-00	CHIP CERAMIC	390PF GRM40 COG391J 50	ICP	1,000 EA
3	01-00205-00	CHIP CERAMIC	390PF GRM39 COG391J 50	ICP	1,000 EA
3	01-00220-00	CHIP CERAMIC	47PF GRM40 COG470J 50	ICP	1,000 EA
3	01-00222-00	CHIP CERAMIC	47PF GRM39 COG470J 50	ICP	1,000 EA
3	01-00223-00	CHIP CERAMIC	470PF GRM40 COG471J 50	ICP	1,000 EA
3	01-00240-00	CHIP CERAMIC	560PF GRM40 COG561J 50	ICP	1,000 EA
3	01-00241-00	CHIP CERAMIC	5.6PF GRM39 COG5R6C 50	ICP	1,000 EA
3	01-00251-00	CHIP CERAMIC	6PF GRM39 COG060D 50	ICP	4,000 EA
3	01-00261-00	CHIP CERAMIC	680PF GRM39 X7R681J 50	ICP	1,000 EA
3	01-00275-00	CHIP CERAMIC	8PF GRM39 COG080D 50	ICP	1,000 EA
3	01-00007-20	CHIP TANTALUM	1UF 293D105X0016A2T1	ICP	1,000 EA
3	05-00002-40	DIODE SI CHIP	KDS226	ICP	1,000 EA
3	05-00003-40	DIODE SI CHIP	KDS184S	ICP	31,000 EA
3	05-00001-10	DIODE VARIVAP CHIP	KDV251S	ICP	2,000 EA
3	04-00016-01	FET	2SK211 GR	ICP	3,000 EA

	3	06-00009-10	LED LAMP	19-21UBC-08/TR8	ICP	9,000 EA
	3	03-00058-01	TRANSISTOR	KTC3875S(GR)	ICP	9,000 EA
	3	03-00044-01	TRANSISTOR	KTA1504ST1(G)	ICP	7,000 EA
	3	03-00051-01	TRANSISTOR	KRC110S NK	ICP	5,000 EA
	3	03-00046-01	TRANSISTOR	KRC101SNA	ICP	11,000 EA
	3	03-00063-01	TRANSISTOR	2SC5345SY	ICP	4,000 EA
	3	03-00070-01	TRANSISTOR	KTC3879Y	ICP	1,000 EA
	3	10-00054-00	I.C AM/FM DETECTOR	TK10931VTL	ICP	1,000 EA
	3	10-00004-00	I.C REGULATOR	KIA78L05F	ICP	1,000 EA
	3	10-00014-00	I.C PLL(DUAL)	BU2630F	ICP	1,000 EA
	3	10-00005-10	I.C CPU(OTP)	S3P8249XZZ-TWR9	ICP	1,000 EA
	3	10-00065-00	I.C EEPROM	AT93C66A-10SI-2.7		1,000 EA
	3	10-00031-01	I.C OP AMP	MC33074D SO-14	ICP	1,000 EA
	3	17-03103-10	POTENTIOMETER CHIP	VG039NCHXTB103-PBF	ICP	1,000 EA
	3	17-02473-10	POTENTIOMETER CHIP	VG039NCHXTB473-PBF	ICP	2,000 EA
	3	17-01222-10	POTENTIOMETER CHIP	VG039NCHXTB222-PBF	ICP	2,000 EA
	3	17-01104-10	POTENTIOMETER CHIP	VG039NCHXTB104-PBF	ICP	1,000 EA
	3	33-00031-00	P.C.B ASS'Y	160X200.5X1.6 FR4 1/1	ICP	1,000 EA
	4	18-00032-02	P.C.B MAIN	146X153.5X1.6 FR4 1/1	ICP	1,000 EA
	4	18-00096-03	P.C.B SUB VOLUME	82.1X16.1X1.6 FR4 1/1	ICP	1,000 EA
	4	18-00108-03	P.C.B SUB FRONT	148.9X46X1.6 FR4 1/1	ICP	1,000 EA
7	2	CBM237SPM	SUB PCB MANUAL ASS'Y			1,000 EA
	3	32-00000-01	SW SLIDE	SKS-22021T	ICP	3,000 EA
	3	32-00003-21	SW TACT	TM115AP	ICP	10,000 EA
8	2	CBM237PA	PACKING ASS'Y			1,000 EA
	3	29-00000-00	MOLEX RECEPTACLE ASS'Y	UL1015/L 900MM.PITCH 2.5MM.FUSE 2A		1,000 EA
	3	93-00076-00	OWNER'S MANUAL	ART & WOODFREE PAPER 148X210 MM.		1,000 EA
	3	93-00077-00	RTTE BOOKLET	WOODFREE PAPER 148X210MM.		1,000 EA
	3	94-00008-01	WARRANTY CARD (ITALY)	WOOD FREE PAPER 70X92MM.		1,000 EA
	3	94-00013-01	WARRANTY CARD (SPAIN)	WOOD FREE PAPER 83X160MM.		1,000 EA
	3	94-00015-01	WARRANTY CARD (UK)	WOOD FREE PAPER 106X149MM.		1,000 EA
	3	94-00061-00	PANORAMA CATALOGUE	ART CARD 105x150 MM.		1,000 EA
	3	96-00085-00	LABEL SERIAL	ARTPAPER 30X40	ICP	1,000 EA
	3	96-00088-00	LABEL MULTI	TRANSPARENT POLYESTER FILM 70x70xT0.10MM.	ICP	1,000 EA
	3	96-00172-00	NAME LABEL	POLYESTER SILVER 50x17xT=0.05MM.		1,000 EA
	3	96-00175-00	FUSE LABEL 2A	POLYESTER SILVER 8x50xT=0.05MM.		1,000 EA

	3	97-00162-00	TRAY BOX PULP MOLD	N30 : C70 230Wx235Lx63H		1,000 EA
	3	97-00163-00	INNER BOX	SW1E 238(W)X 238(D)X66(H)		1,000 EA
	3	97-00164-00	OUT BOX	DW BC 415(W)X244(D)X244(H)		0,167 EA
	3	98-00013-04	CELLOPHANE	P.P CELLOPHANE 150X300XT0.05MM.		1,000 EA
	3	98-00013-05	CELLOPHANE	P.P CELLOPHANE 250X350XT0.05MM.	ICP	1,000 EA
9	2	CMB237WMA	WIRE MIC ASS'Y			1,000 EA
	3	16-00021-07	WIRE	1007 AWG 24 (11/0.16) G		0,070 ME
	3	16-00018-07	WIRE	1007 AWG 24(11/0.16) RED	ICP	0,070 ME
	3	16-00020-07	WIRE	1007 AWG 24(11/0.16) YEL	ICP	0,060 ME
	3	16-00021-07	WIRE	1007 AWG 24 (11/0.16) G	ICP	0,060 ME
10	2	CBM237WMP	WIRE MAIN PCB ASS'Y			1,000 EA
	3	16-00026-07	WIRE	1007 AWG 26(7/0.16) YEL	ICP	0,180 ME
		16-00027-07	WIRE	1007 AWG 26(7/0.16) GRN	ICP	0,180 ME



SUB J104  
SUB J105  
MAN  
SUB  
SUB  
SUB  
SUB  
SUB  
SUB  
SUB IC MTG.  
SUB  
SUB  
SUB IC MTG.  
SUB TR 2SC2314(F) MTG.  
SUB IC MTG.  
SUB  
SUB  
SUB IC MTG.  
SUB  
SUB  
SUB  
SUB  
SUB  
SUB  
SUB  
SUB  
SUB  
SUB  
SUB  
SUB  
SUB  
SUB  
SUB FOR SHIELD PLATE 76-00008-00  
SUB

SUB R533  
SUB R433  
SUB C24  
SUB  
SUB MIC101  
SUB  
SUB J106  
SUB SW102

SUB SW103.104.105

SUB

SUB

SUB

SUB

SUB

SUB

SUB

SUB

SUB

SUB

SUB

SUB

SUB

SUB

SUB

SUB

SUB

SUB

SUB

SUB

SUB

SUB

SUB

SUB

FIN

ACCESSORY MIC:1,ACCESSORY SCREW:1

FIN

MICROPHONE:1

MAN R515.911

MAN R1.2.3

MAN R410.613

MAN C438

MAN C439

MAN CT401

MAN CF501

MAN CF502

MAN	X501
MAN	X401
MAN	X101
MAN	L501
MAN	L701.702.703.704.LA402
MAN	L502
MAN	L301
MAN	L503
MAN	L504
MAN	L505
MAN	L401A.402A
MAN	L403A
MAN	T601
MAN	T001
MAN	L302
MAN	L409
MAN	L404A
MAN	L413
MAN	L408
MAN	L410
MAN	L411
MAN	L506
SUB	LA401
SUB	
SUB	
MAN	TH501.503.901
MAN	TH502
MAN	D601
MAN	D001
MAN	D906
MAN	D706
SUB	LCD101
AUT	C101.401
AUT	C609.913.915
AUT	C610
AUT	C305.306.308.514.523.538.904.911
AUT	C709.716.902.908



AUT C507.508.526.702.708.712  
AUT C914  
AUT C533  
AUT C104  
AUT C608  
AUT C100.302.711  
AUT C613  
SUB

SMD R609  
SMD RA402  
SMD R504.506.507.606  
SMD R144.528.RA906  
SMD R138.310.311.501.545.903.913.920  
SMD R100.126.127.128.131.132.133.134.306.524.  
SMD 536.724.726.727.729.731.732.803  
SMD R101.102.103.104.105.106.107.108.109.110.111.  
SMD 112.113.114.115.116.117.118.119.120.121.122.  
SMD 123.124.125.308.309.530.537.538.539.703.915  
SMD R7.136.525.701  
SMD R540  
SMD R712  
SMD R511  
SMD R301.725  
SMD R909  
SMD R409  
SMD R403.502.719.910  
SMD R706.707.715.902  
SMD R401  
SMD R721.916  
SMD R10.402  
SMD R714  
SMD R307.509.604.709.710.717.730.802.901.  
SMD 906.908.912.918  
SMD R608.905  
SMD R145.303.514.523.601  
SMD R542

SMD	R408
SMD	R512
SMD	R534
SMD	R505.508
SMD	R527.535.603.914
SMD	R711.720
SMD	R702
SMD	R146.406
SMD	R304.705
SMD	R147.407.917
SMD	R510.728.904
SMD	R130.135.404.405.517.543.544.704.RA401
SMD	R6.137.139.140.141.142.143.503.516.520.521.532.
SMD	607.713.716.722.723.907
SMD	R526.801
SMD	R533.919
SMD	R302
SMD	R305.519.531
SMD	R8.518.541.602
SMD	R708
SMD	R605
SMD	R9.522
SMD	C001.003.100A.114.304.318.402A.403A.408A.409A.501.504.509.
SMD	510.512.513.527.531.532.603.604.605.614.703.710.801.903.905.
SMD	907.909.910.912
SMD	C110.502.607.615.705
SMD	C002.004.323.324.518.519.520.522.525.528.530.536.
SMD	537.611.701.704.706.717.718
SMD	C423.424
SMD	C606
SMD	C601
SMD	C514A
SMD	C901
SMD	C111.303.325.503.529.535.802
SMD	C415.420.422.425.428
SMD	C517
SMD	C714

SMD	C307
SMD	C602.713
SMD	C3.319.521
SMD	C107.108.109.316.317.411.534
SMD	C417
SMD	C424A
SMD	C112.311.505
SMD	C421
SMD	C309.508A
SMD	C407A
SMD	C803
SMD	C102.103.105
SMD	C314
SMD	C413.426
SMD	C310.515
SMD	C414
SMD	C312
SMD	C113.313.326.511.707
SMD	C404A
SMD	C416.427.434.435
SMD	C429
SMD	C516
SMD	C437
SMD	C412
SMD	CA401
SMD	C430
SMD	C524
SMD	C315.320.321.506
SMD	C715
SMD	C313A
SMD	C301
SMD	DA501
SMD	D1.2.101.102.103.104.105.106.107.108.109.401.
SMD	402.501.502.503.504.505.507.508.510.701.
SMD	702.703.704.801.803.901.902.903.905
SMD	D301.302
SMD	Q501.502.503

SMD LED1.2.3.4.5.6.7.8.9  
SMD Q401.506.508.510.701.705.901.906.907  
SMD Q2.702.703.902.905.911.913  
SMD Q507.512.513.903.904  
SMD Q301.302.303.304.504.505.509.704.908.909.910  
SMD Q305.306.307.402  
SMD Q403  
SMD U501  
SMD U702  
SMD IC103  
SUB IC101  
SMD IC102  
SMD U701  
SMD RV902  
SMD RV501.802  
SMD RV301.901  
SMD RV801  
SMD  
SMD  
SMD  
SMD

MAN SW501.601.ANL1  
MAN SW101.102.103.104.105.106.107.108.109.110

SUB  
FIN  
FIN  
FIN  
FIN  
FIN  
FIN  
FIN  
FIN  
FIN  
FIN

FIN  
FIN  
FIN  
FIN FOR MANUAL  
FIN FOR UNIT

SUB SW --- SUB PCB UP/DOWN  
SUB 0.5:0.5  
SUB SW --- SUB PCB UP/DOWN  
SUB 0.5:0.5  
SUB SW --- MIC(+)  
SUB 0.5:0.5  
SUB SW --- MIC(-)  
SUB 0.5:0.5

SUB SPK(+) ---- P.C.B 0.5:0.5  
SUB SPK(-) ---- P.C.B 0.5:0.5



33-00031-00

