

MODEL : MB-45

HOW TO CHANGE FROM 40CH TO 400CH (400CH TO 40CH)

THIS SAMPLE IS 40CH

< 40CH --> 400CH >

1. POWER SWITCH OFF
2. KEEP CH 9 BUTTON PRESSED (PRESS CH 9 SWITCH CONTINUOUSLY)
3. POWER SWITCH ON
4. RELEASE CH 9 BUTTON.
5. NOW THE UNIT BECAME 400CH AND CH 9 BUTTON BECAME BAND SWITCH.
(A, B, C, D, E, F, G, H, I, J)

< 400CH --> 40CH >

1. POWER SWITCH OFF
2. POWER SWITCH ON
3. NOW THE UNIT BECAME 40CH AND CH 9 BUTTON BECAME CH 9 SWITCH.

< SECURITY >

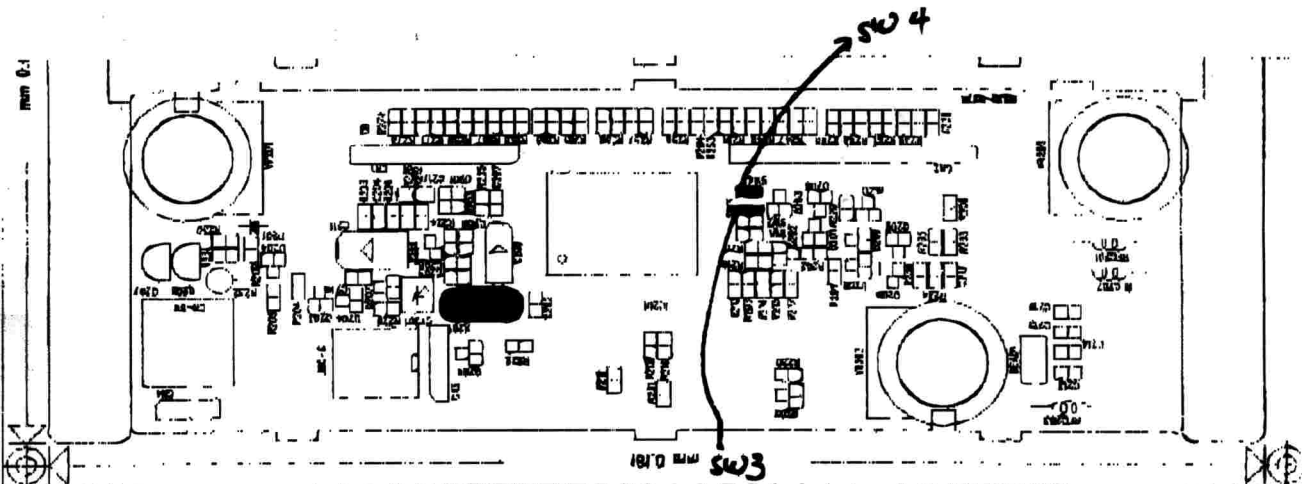
THE END USER CAN AVOID THE INSPECTION BY THE AUTHORITY (POLICE)
FOR USING 400CH.

* CPU MODE *

32 SW1	33 SW2	34 SW3	35 SW4	MODE
0	0	1	0	400 CH (5, RASTER)
0	0	0	1	40 CH (5, RASTER)

EX) (0)=OPEN

EX) (1)=SHORT



< FRONT PCB >